



Harris County
Public Health
Building a Healthy Community

FY 2024 How to Best Meet The Need Training



HCPHTX.ORG



Ryan White Part A Data



FY23 Ryan White Program Services

- AIDS Drug Assistance Program Treatments*
- AIDS Pharmaceutical Assistance (LPAP)
- Child Care Services
- Early Intervention Services (EIS)
- Emergency Financial Assistance
- Food Bank/Home Delivered Meals
- Health Education/Risk Reduction
- Health Insurance Premium and Cost Sharing Assistance for Low-Income Individuals
- Home and Community-Based Health Services
- Home Health Care
- Hospice Services
- Housing
- Linguistic Services
- Medical Case Management, including Treatment Adherence Services
- Medical Nutrition Therapy
- Medical Transportation
- Mental Health Services
- Non-medical Case Management Services
- Oral Health Care
- Other Professional Services
 - Legal
 - Permanency Planning
 - Income Tax Preparation
- Outpatient/Ambulatory Health Services
- Outreach Services
- Psychosocial Support Services
- Referral for Health Care and Support Services
- Rehabilitation Services
- Respite Care
- Substance Abuse Outpatient Care
- Substance Abuse Services (residential)

Key
 * State Part B Only
Houston EMA/HSDA FY2023 RW Allocations
 Funded in EMA/HSDA under State Services

Funding Stream Basics

- The RWPC plans services and allocates money for the following federal & state funds in a single, unified planning & allocation process
 - **FY 23 RW/A = \$24,342,151** (FY22 = \$23,198,771)
 - **FY 23 MAI = \$2,382,116** (FY22 = \$2,427,918)
 - Part A Recipient **Admin** limited to 10% (FY22 = 7.2%)
 - Part A Recipient **QM** limited to 5% (FY22 = 1.8%)
 - **RW Part B** (pass-through from TDSHS via TRG)
 - **State Services** (State HIV funds via TRG)

Allocation & Expenditure Data

- **Allocations** are the funds appropriated by the Planning Council to Client Services
- **Expenditures** are the actual documented expenditures during the respective Grant Year
- Allocation Data for the HTBMTN service category slides is provided by Calendar Year (CY)
- Allocations were computed by prorating FY21 and FY22 Allocations from January 2022 through December 2022
- Expenditures by Grant and Fiscal Year will be available to P&A Committee during the allocation process to assist in finalizing FY 23 allocations

Service Utilization Data

- Data is provided by Calendar Year (CY) 2022
- Data reflects net Unduplicated Clients (UDC) served

CY 2022 Service Utilization Facts

- CY22 reflected a slight increase of 241 Unduplicated Clients (UDC) served compared to CY21
- 3,451 (22%) of UDC were “new” clients to the RW system as in they did not receive any RW services in CY22
- 91% resided in Harris Co. (CY21 was 90%)
- 34.3% Hispanic Clients were served (CY21 was 32.4%)
- 339 (2%) (333 M2F, 6 F2M) Transgender were served
- 730 Youth (4.7%) (ages 13-24) were served (CY21 was 4.9%)
- 66 Children (ages 0-12) were served

New for FY 2023

- No New Services for FY2023

RFP Expected in 2023

- The Ryan White Part A or MAI services required to be competed for FY23 are:
 - Rural Primary Care Bundle (formerly Part B-funded Primary Care Bundle)
 - The RFP will include the initial contract plus 3-one year renewal options
 - Does not apply to the Rural Primary Bundle just awarded under RFP22-0352
 - When RFP22-0352 goes out to bid again in 2027, both RFP's will be combined into one
- All other current Part A, MAI, and EHE contracts with community-based non-profit entities are eligible for renewal

FY 2023 Areas of Focus

Unspent Funds & Underspending Contracts

- Both HRSA and the RWPC are concerned about recent underspending and the copious amount of carryover funds in FY21 and FY22
- Unspent funds are a significant area of focus for FY23
- RWGA will vigorously monitor FY23 contracts and will shift funds from underspending contracts quickly
- Covid-19-related waivers for Unobligated Balances exceeding 5% of the EMA’s annual Formula Award may no longer be possible for FY23
- Sending unobligated or carryover funds to ADAP is a last resort

All Services/All Grants

CALENDAR YEAR	Total Number of Clients Served	Number in Harris County	Number Outside of Harris County	Number of New Clients (did not receive RW services in prior CY)
2022	15,381	13,868	1,513	3,451 (22%)
2021	15,140	13,687	1,453	3,174 (21%)

2% of clients served were Transgender individuals (n=339)	M	F	AA Non	W non	Other non	H/L
	2022	77%	23%	49.6%	13.7%	2.3%
2021	76.1%	23.9%	51.1%	14.3%	2.2%	32.4%

New Clients vs. All Clients

(All Grants, did not receive any RW or SS funded services in prior CY)

CALENDAR YEAR 2022	Total Number of Clients Served	Number in Harris County	Number Outside of Harris County	Notes
All Clients	15,381	13,868	1,513	90.2% in Harris Co
New Clients	3,451	3,168	283	91.8% in Harris Co

	M	F	AA non	W non	Other non	H/L
2% of new clients served were Transgender individuals (n=71)						
All Clients	77%	23%	49.6%	13.7%	2.3%	34.4%
New Clients	79.7%	20.3%	51.1%	13.6%	2.2%	33.1%

questions



Harris County
Public Health
 Building a Healthy Community

Houston/Harris County: Ending the HIV Epidemic Overview



HCPHTX.ORG



Ending the HIV Epidemic - A Plan for America

Ending
 the
 HIV
 Epidemic
 A PLAN FOR AMERICA

GOAL:

75%
 reduction in new
 HIV infections
 by 2025
 and at least
90%
 reduction
 by 2030.



www.hiv.gov



The time is *Now*.



Ending
the
HIV
Epidemic

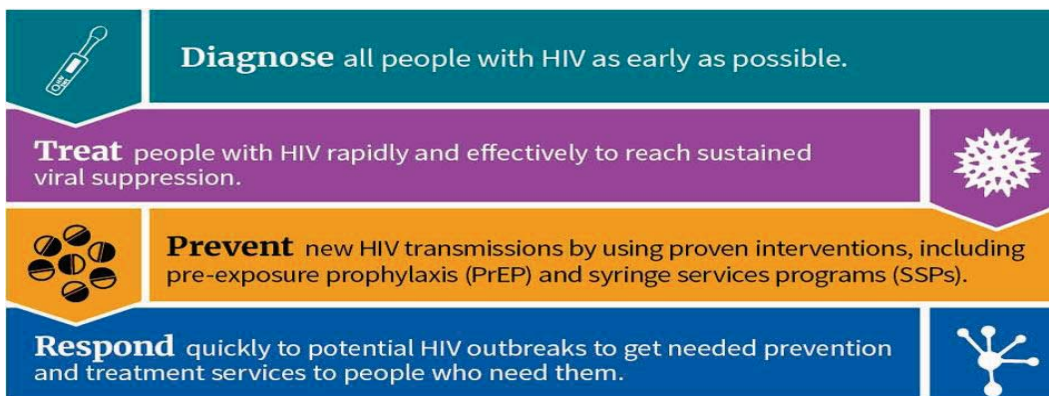
We have an unprecedented opportunity to end the HIV epidemic in America. Now is the time.

- **Right Data:** Ability to gather information related to geographic locations and populations affected by HIV
- **Right Tools:** Advances in biomedical and scientific research, evidence-based HIV care, and prevention models.
- **Right Leadership:** Revitalized energy from federal and local partners



Five Pillars of EHE

The federal Ending the HIV Epidemic initiative focuses on four key pillars that, implemented together, can end the HIV epidemic in the U.S.: **Diagnose, Treat, Prevent, and Respond**.



HIV Planning partners in Houston/Harris County supports the development of a Fifth Pillar regarding **Quality of Life (QoL)** priorities for people with HIV. What are the ongoing prevention needs for people living with HIV, and how we will measure achievement?

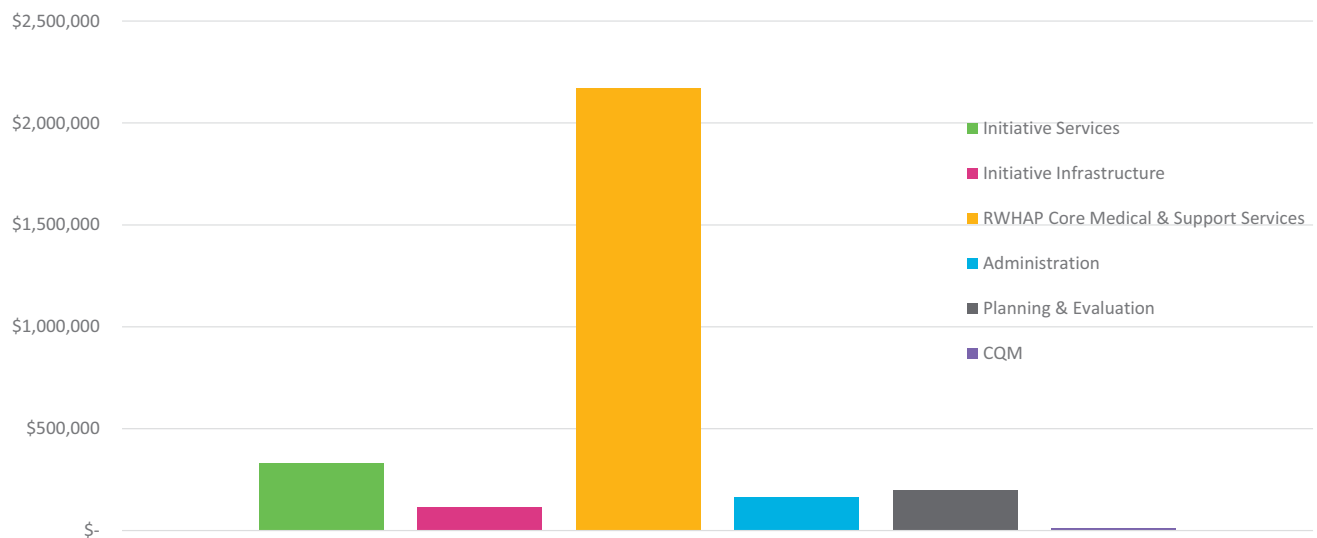
EHE Pillar Partners

- Diagnose
 - Houston Health Department

- Prevent
 - Harris County RW/A FQHC's
 - Avenue 360
 - St. Hope Foundation
 - Legacy Community Health
 - Harris Health System

- Respond
 - Houston Health Department/Harris County Public Health (RWGA)

FY 2020-2022 EHE Award Allocations



EHE Activities 2020-2022



RAPID START



MEDICAL
TRANSPORTATION



MEDIA
CAMPAIGN



DATA
INTEGRATION



Rapid Start Implementation - What is Rapid Start

- Synonymous with Test and Treat
- Initiation of antiretroviral medication within of 72-hours HIV diagnosis or presenting to clinic for return to care patients
- Start of medication should not be significantly delayed by lab processing or eligibility determination.



Rapid Start Implementation - HIV Services

- Outpatient Medical Care and Emergency Financial Assistance - Medication
- First Primary Care Visit
- Initial ART prescription

Rapid Start Implementation - Patient Eligibility

- EHE Grant Eligibility Requirement
 - HIV Diagnosis
 - Harris County Residence
- RWGA Defined EHE Eligible Population
 - New HIV Diagnosis (within past 12 months)
 - New to Houston EMA RW Care (previously diagnosed and new to Houston)
 - Return to RW Care (no RW service in prior 12 months)

Rapid Start Outcomes

Time Period: 3/1/22-2/28/223

EHE Clients

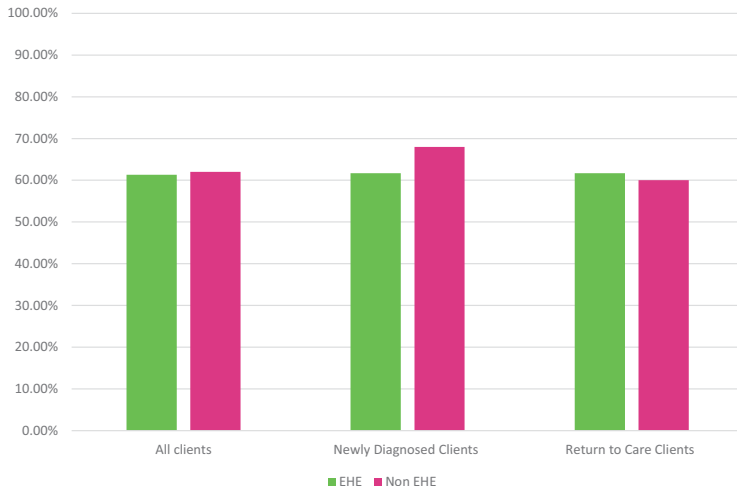
- 805 clients served
- 655 Newly Diagnosed clients
- 214 Return to Care clients

Non-EHE Clients

- 14,804 clients served
- 3,339 Newly Diagnosed clients
- 885 Return to Care clients

Rapid Start Outcomes

Viral Load Suppression Rates



EHE Clients

- Viral Load Suppression rate
- All clients – 61.3%
 - Newly Diagnosed Clients 61.7%
 - Return to Care Clients 96.3%

Non-EHE Clients

- Viral Load Suppression Rates
- All Clients- 62%
 - Newly Diagnosed Clients 68%
 - Return to Care Clients 60%

Rapid Start Outcomes

EHE Clients

- ART Access Rates
 - 25.6% of clients accessed Emergency Financial Assistance to obtain ART

Non-EHE Clients

- ART Access Rates
 - 3.5% of clients accessed Emergency Financial Assistance to obtain ART

Rapid Start Implementation - Patient Eligibility 2023

- EHE Grant Eligibility Requirement
 - HIV Diagnosis
 - Harris County Residence
- RWGA Defined EHE Eligible Population
 - Proof of HIV Diagnosis



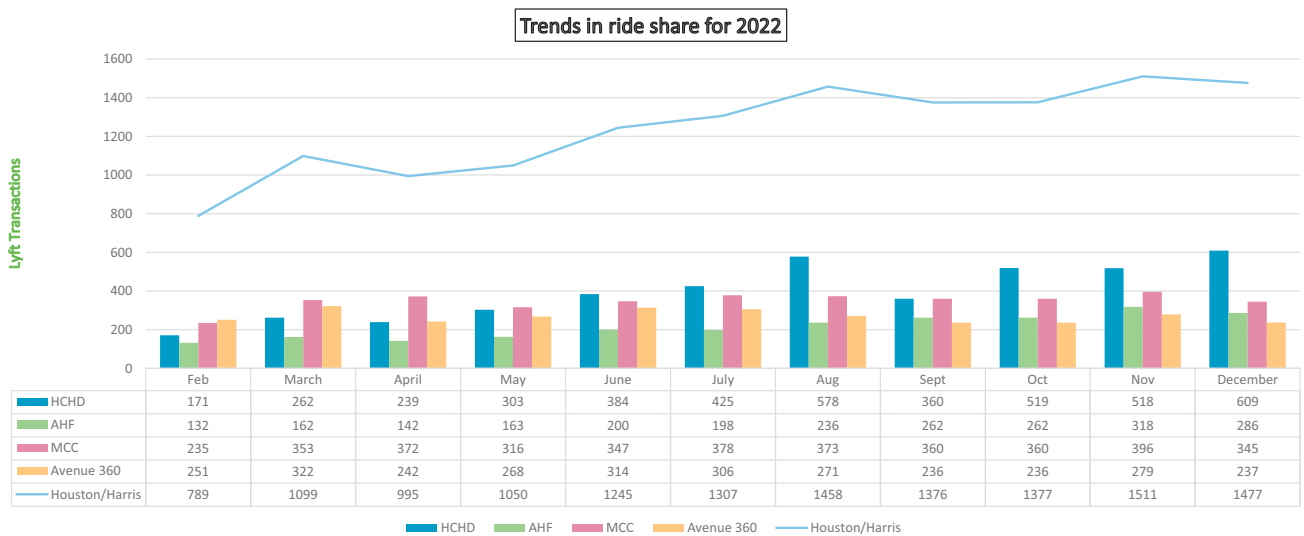
AVENUE 360
HEALTH & WELLNESS



Medical Transportation Update



Medical Transportation Trends 2022



Billboard Ad



Housing

Technical Assistance with NASTAD

Feasibility Study

Collaboration with HOPWA

Client Level Interventions

EHE Community Planning

- Led by CDC Recipient Houston Health Department
- Engaging Non-Traditional HIV Partners
- Initial Workgroups Concluded – transition to Integrated Comprehensive Planning

Ending the HIV Epidemic 2023-2024

EHE Activities 2023- 2024

Rapid Start	Medical Transportation
Health Promotions	Data System Updates
Unstable Housing	Quality of Life
The Master Plan	Status Neutral Care System Model

THE MASTER PLAN

A Plan to End the HIV Epidemic in Houston/Harris County by the End of 2030.

“If you are neutral in situations of injustice, you have chosen the side of the oppressor.”
- Desmond Tutu

Ending the HIV Epidemic

ehehouston.org

Core Values:

- Transparency
- Equity
- Racial Justice
- Social Justice
- Community
- Advocacy
- Empowerment

Focus Areas

1. Education and Awareness
2. Status Neutral Systems
3. Outreach and Community Engagement
4. Research, Data & Evaluation
5. Policy & Social Determinants



Thank you

Jason Black, EHE Coordinator
Email: Jason.black@phs.hctx.net
Contact: (832)973-7702



Questions

Glenn Urbach, LMSW
Program Manager
Harris County Public Health-Ryan White Grant
Administration
(713) 274-5790
glenn.urbach@phs.hctx.net



Harris County Public Health

{ Vision }

- Healthy People,
- Healthy Communities,
- A Healthy Harris County

{ Values }

- Excellence
- Compassion
- Flexibility
- Integrity
- Accountability
- Professionalism
- Equity

{ Mission }

- Promoting a Health and Safe Community
- Preventing Injury and Illness
- Protecting You

www.hcphtx.org